

1

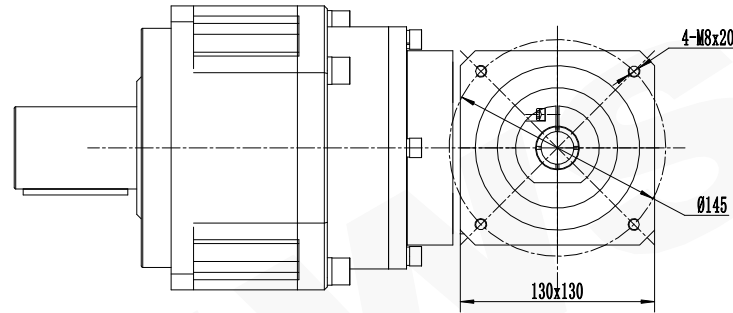
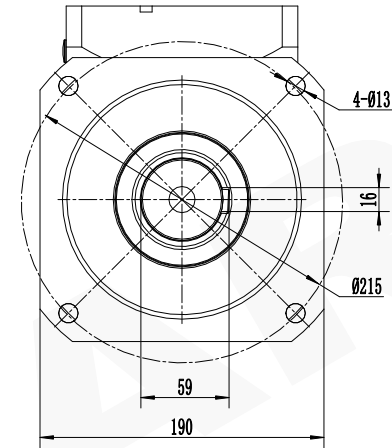
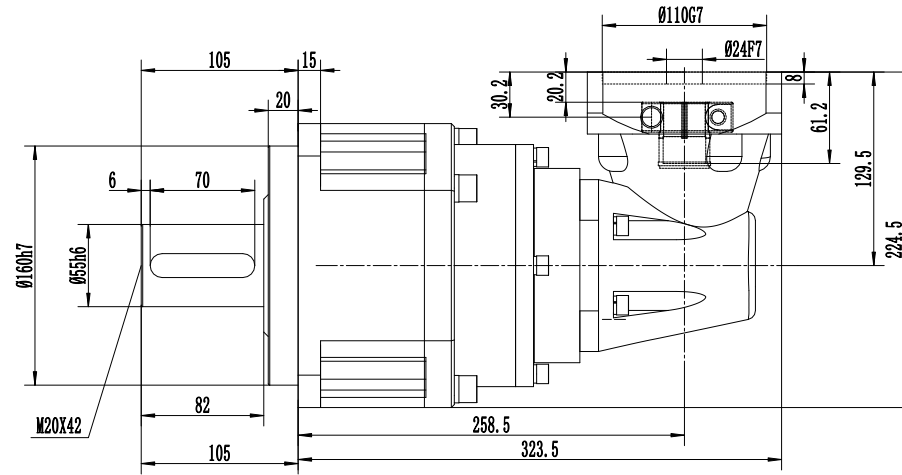
2

3

4

5


6



未注线性尺寸极限偏差
Unmarked tolerance

减速比 (Ratio i)	i 推荐	60/64/80/100/120/160/200		0.5-3	±0.2
	i 不推荐	256/320	512	3-6	±0.3
额定承载扭矩 (Rated load torque)	Nm	1568	1000	6-30	±0.5
最大加速力矩 (Max. acceleration torque)	Nm	2822.4	1800	30-120	±0.8
急停扭矩 (Emergency stop torque)	Nm	4704	3000	120-400	±1.2
*备注三级减速机需与厂家沟通				400-1000	±2

精密行星减速机技术参数

精密行星减速机技术参数				Precision Planetary Gear Boxes
容许最大径向载荷 (Max. radial load)	14000N	空载力矩 (No-load torque)	≤ 0.36Nm	 NEWSTART® 紐氏達特
容许最大轴向载荷 (Max. axial load)	7000N	润滑 (Lubrication)	合成润滑油	
额定输入转速 (Nominal input speed)	1500r/min	使用环境温度 (Operation temperature)	-15℃~+90℃	
最大输入转速 (Max input speed)	3000r/min	使用寿命 (Service life)	≥20000h	ABR180L3-i-P2-S2 24-58-110-145-M8
噪音 (Noise)	≤ 72db	防护等级 (Protection grade)	IP54	
回程间隙 (Backlash)	15arcmin			
		ABR系列	Tel/电话: 0533-6288333 6288444	A. ABR. 180.
		P2 L3	Fax/传真: 0533-6288411	
			Web/网址: www.newstart.cn	

1

2

3

4

5

6